



# Grade 6 Math Circles

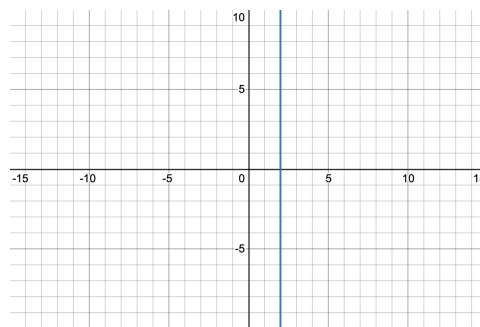
## November 3rd, 2021

### Linear Relations - Problem Set

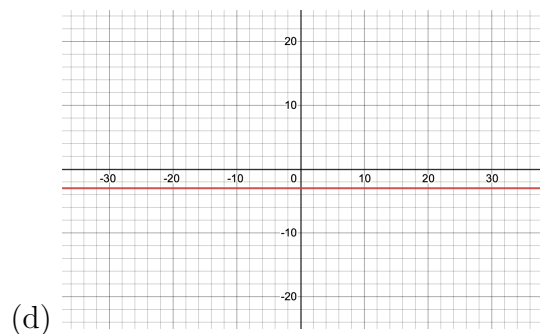
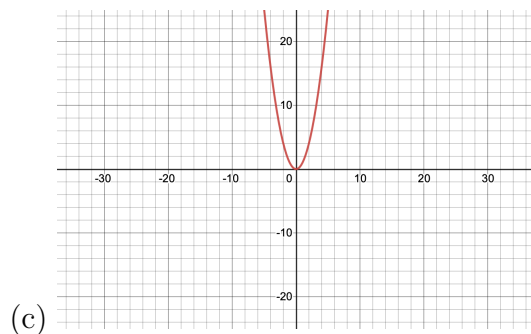
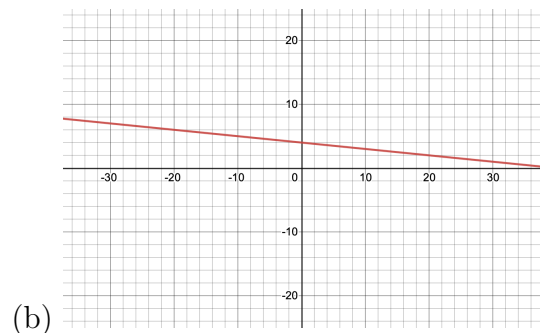
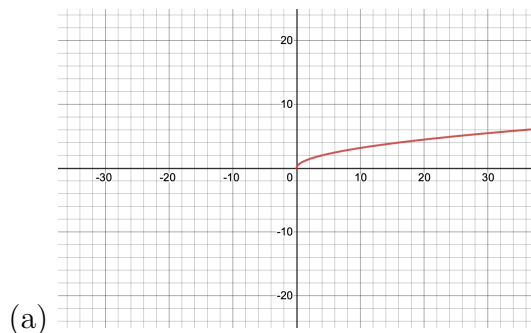
1. Complete the table below with the values of  $x$  and  $y$  from the equation  $-2x - 5y = 1$ .

$x$	-3	12		-43			0	
$y$			7		29	-51		0

2. **TRUE** or **FALSE**. The slope of the following line is 0.



3. Which of the following graphs are linear relations?





4. What is the equation of the line that passes through the points  $(-12, 3)$  and  $(81, -59)$ ? (Hint: calculate the slope first, then the  $y$ -intercept).
5. Does the line that passes through the points  $(3, 3)$  and  $(-32, -11)$  also pass through the point  $(249, 101)$ ?
6. A linear relation has a slope of  $-\frac{3}{2}$  and contains the point  $(8, 0)$ . What is the value of  $y$  when  $x = 0$ ?
7. If a line has a slope of 2 and passes through the points  $(2, 7)$  and  $(a, 3a)$ , what is the value of  $a$ ?
8. An unspecified amount of money is deposited into a bank account. Nine days later, the balance in the bank account is \$16075. Twelve days after that, the balance in the bank account is \$20575. Assume this follows a linear relationship.
  - (a) What is the daily rate of money being deposited in the bank account?
  - (b) What was the initial balance of the bank account?
  - (c) What will the balance of the bank account be six weeks after the initial deposit?
  - (d) How long after the initial deposit will the balance in the bank account be exactly \$24700?