

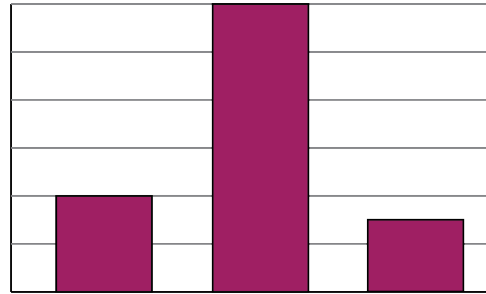
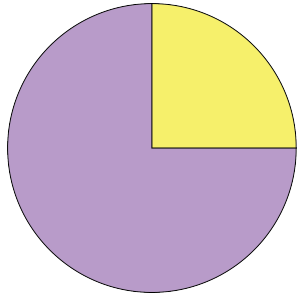


## Problem of the Week

### Problem A

### Missing Data

Jasmine created a circle chart and a bar chart based on data values, but forgot what numbers went with which chart. The charts are shown below. There are five values in total, two belong to the circle chart and three belong to the bar chart.



Here are the values:

V: 30, W: 40, X: 60, Y: 120, Z: 180

Label each chart with the letters matching the appropriate values. Then add values to the scale on the vertical axis of the bar chart.